

User's Manual



**7" Touch Screen
Windows CE 6.0**

Table of Contents:

Package Contents.....	4
Device Overview.....	5
Using Battery Power.....	6
Main Menu.....	7
Home Screen.....	8
Settings	9
Setting Volume.....	10
Setting Back-Light.....	11
Setting Time & Date.....	12
Setting Power.....	13
Moving Around.....	14
eBooks	15
Viewing Images.....	16
Playing Audio.....	18
Playing Video.....	19
Flash and Games	20
Windows CE Desktop.....	21
Using Internet	22
PC Connectivity.....	24

Package Contents



Device



TF Card



Ear Phone



Manual



Leather like Cover



Charger

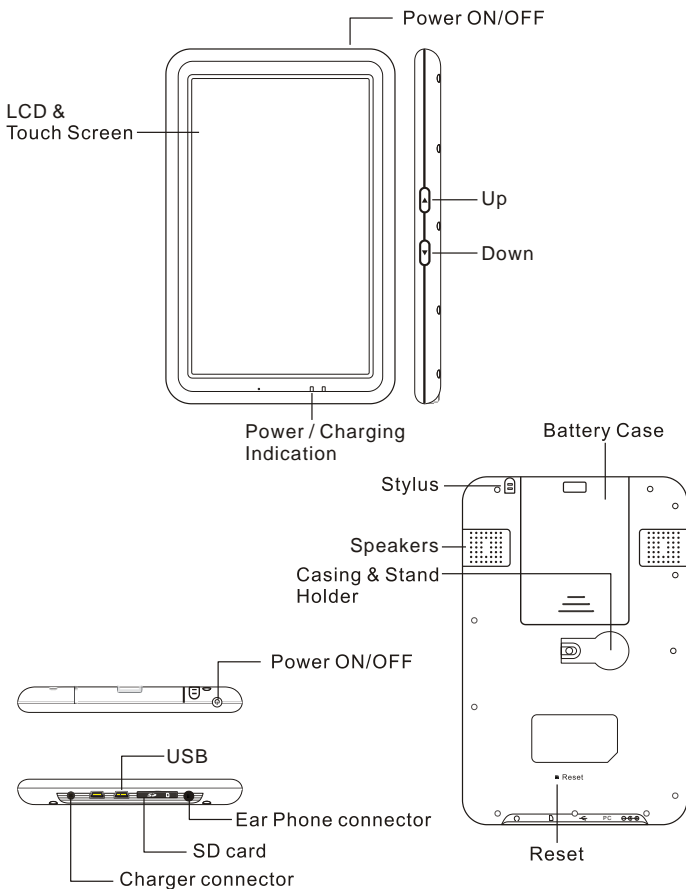


USB Cable



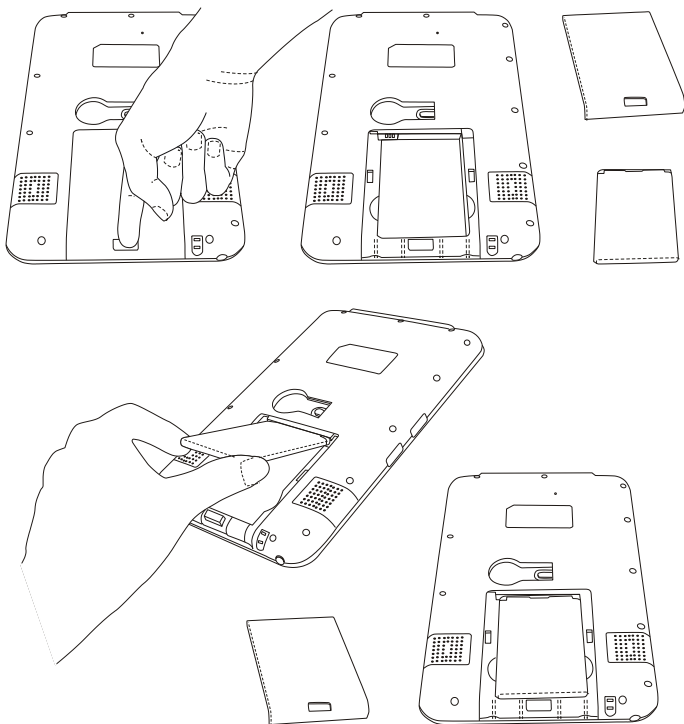
Battery

Device Overview



Using Battery Power

The device is designed to work with a removable battery. A fully charged pack will provide several hours of battery life. Additional battery packs are optional and can be purchased separately.



Main Menu:

The Main Menu screen is the first screen that appears on starting the JWin700 device after the boot-up sequence.

The Main Menu offers large icons of different category of content in the device storage. The device storage card has a respective folder for each category having files and folder related to that.

“Home” icon will take you to the device root or home.

“WindowsCE” will switch the device in a Windows CE Tablet mode where you can use the device as a PC having windows desktop.

“Power” button will display a dialog box having options for “Power Off”, “Stand-by” or “Restart”.

While browsing the different content, you can always come to this Main Menu screen by tapping the “M” icon.

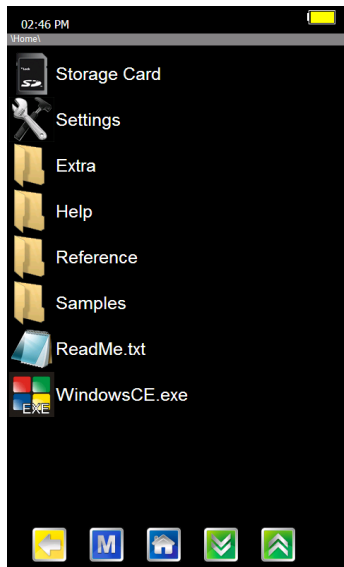


Home Screen:

The “Home” screen is root of the device from where you can access the files and folders both on the device internal flash or the storage card.

The Home also lets you access the settings or going back to the menu by tapping the “M” icon at the bottom.

You can also come to the Home any time by tapping the blue “Home” icon at the bottom of the screen.



All the files and folder including “Settings” and “Help” etc you see below the “Storage Card” is what is present in the “Home” folder in the built-in flash of the device.

If you connect your device with a PC using the USB cable, you can view, modify, delete or add more files here by accessing the /JTOS/Home/ folder of the device.

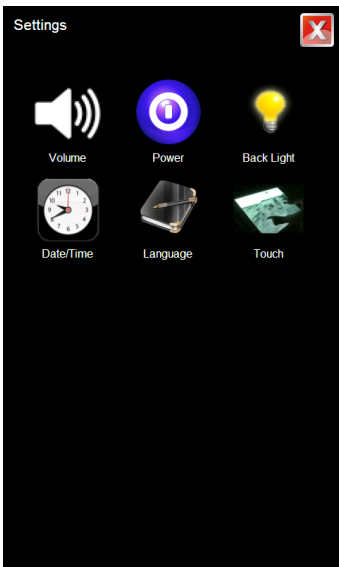
It is recommended to keep only important and light files like samples or reference files of frequent use in the Home folder. For all heavy content, use the storage card.

Settings:

You can change the different device hardware and software related settings by tapping the Settings icon in the main menu or Home screen.

The Settings menu as shown in the this image allows to change the setting parameters of the:

1. Volume
2. Power
3. Back Light
4. Date and Time
5. Language
6. Touch Screen Calibration



Each of these items are explained in following sections.

Setting – Volume:

Adjust the volume level by tapping the + or – sign or use the slider by dragging it to the required level.

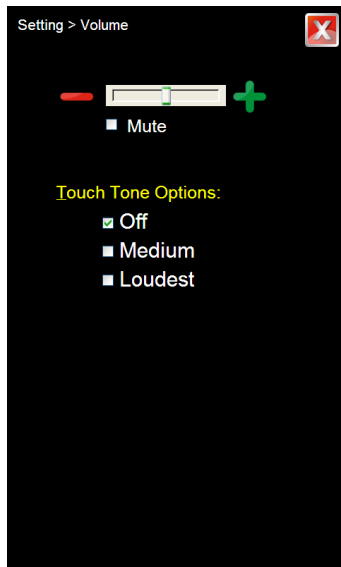
Select the “Mute” option if you want to turn off the volume completely.

Every time you tap the screen of the device any-where, there is touch sound. You can set the volume level of this touch sound by selecting any of the following three options of the “Touch Tone Options”:

1. Off
2. Medium
3. Loudest

Once you are done with the volume setting, exit the volume setting by tapping the red close button on the top-right corner. Exit the volume setting screen will save the volume setting permanently even if you restart the device.

Tip: Keep the volume low for longer battery backup time.

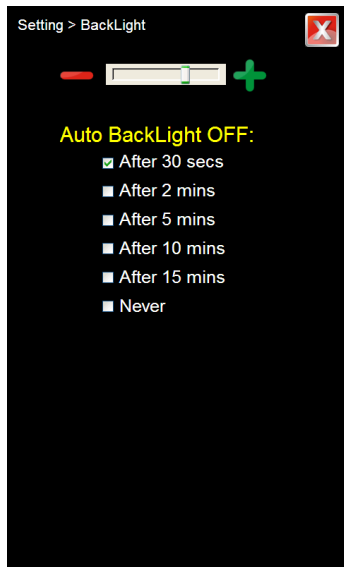


Setting - BackLight:

The TFT LCD panels operate using special light at the back of the panel that adds brightness to the display. More is the intensity of this light, brighter will be the image.

Since the back-light also consumes lot of current, so this is also important in regard to the battery backup time. Keep the back-light dim for longer battery time.

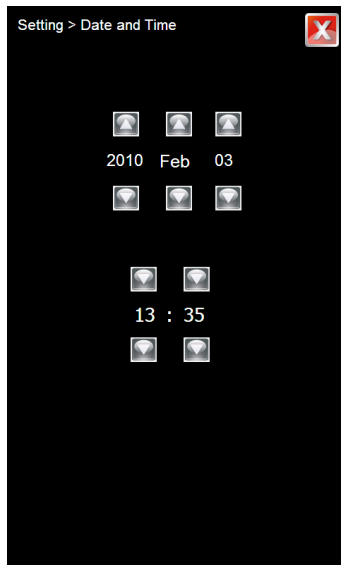
Auto Back-light Off feature will turn of the Back-light after detecting no activity of touch for some time. This means the device currently is not being used and turning off the back-light will save battery power. You can adjust this time enough to make sure the back-light does not turn off while you are reading a page at your pace.



Setting – Date & Time:

Increase or decrease the individual Date or Time value and close the screen by tapping the red close button on the top-right corner when you are done with the setting.

The date and time are displayed in the Main Menu screen and the time is also displayed in the top-left corner while moving around the files and folders in the device.



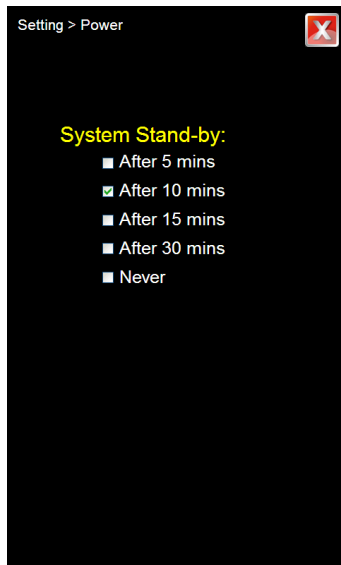
Setting - Power:

In order to save power or increase the battery back-up time, it is recommended to let the system go in stand-by or sleep mode if idle for some time.

In standby mode, the LCD is completely Off and major part of the processing is Off too. However, once resumed or waked, the system will continue same place where it was made to sleep.

In order to turn the device from sleep or standby mode, simply press the power button on top of the device just once.

Setting the System Standby to "Never" will never make it sleep even if the device is not used or unattended for unlimited time.



Moving Around:

Moving around the device content is simply opening files and folders and using the “Back” icon to go back to the previous folder.

Tap any file or folder once to open it.

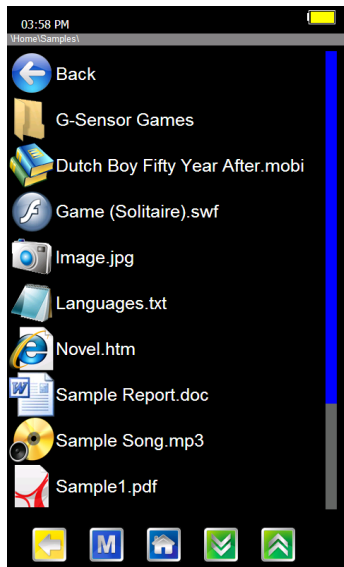
The files that show up are the one that are supported. File formats that are not supported will not appear even if they are present in the SD Card.

Hidden files and folders will also not appear in the list.

You can scroll up or down the file/folder list using the green Up and Down buttons on the bottom of the screen or tapping inside scroll bar grey area.

You can go to the home location any time by tapping the blue “Home” button on the bottom of the screen. Tap the “M” icon to go the graphical start-up main menu screen.

The top grey bar shows your current folder location or complete folder path.



eBooks:

Different file formats are supported for reading eBooks and more formats support can be added by installing additional WinCE eReader software.

The supported formats include:

- Text Files (.txt)
- PDF Documents
- Word Documents
- HTML Files
- MobiPocket eBooks (.mobi, .pdb)
- Comics/Magazines with MMCE Reader (.cbr, .cbz)

The device will open each format using its respective Reader software automatically. Lots of free eBooks are pre-loaded with the device in .mobi format.

Note: For languages other than English, save the text files as Unicode format.

AND WHO TOOK FOR HIS MOTTO
AS I HOPE EVERY ONE WHO READS THESE
PAGES WILL DO
THESE LINES BY MADELINE S. BRIDGES:

*"Give to the world the best you have
And the best will come back to you."*

INTRODUCTION

In recent years American literature has been enriched by certain autobiographies of men and women who had been born abroad, but who had been brought to this country, where they grew up as loyal citizens of our great nation. Such assimilated Americans had to face not only the usual conditions confronting a stranger in a strange land, but had to develop within themselves the noble conception of Americanism that was later to become for them a flaming gospel. Andrew Carnegie, the canny Scotch lad who began as a cotton weaver's assistant, became a steel magnate and an eminent constructive philanthropist. Jacob Riis, the ambitious Dane, told in *The Making of an American* the story of his rise to prominence as a social and civic worker in New York. Mary Antin, who was brought from a Russian ghetto at the age of thirteen, gave us in *The Promised Land* a most impressive interpretation of America's significance to the foreign-born. The very title of her book was a flash of inspiration.

To this group of notable autobiographies belongs *The Americanization of Edward Bok*, which received, from Columbia University, the Joseph Pulitzer Prize of one thousand dollars as "the best American biography teaching patriotic and unselfish service to the Nation and at the same time illustrating an eminent example." The judges who framed that decision could not have stated more aptly the scope and value of the book. It is the story of an unusual education, a conspicuous achievement, and an ideal now in course of realization.

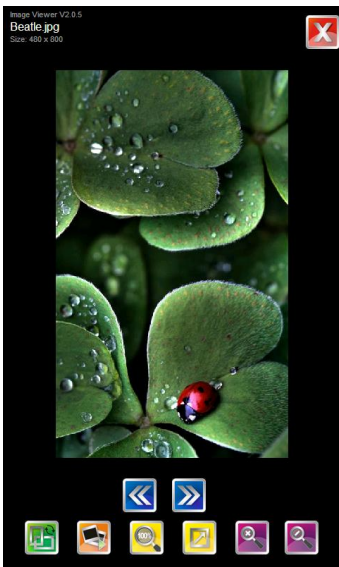
Library Menu

Viewing Images:

In order to view an image, or picture or scan page of a book, simply tap once on any of the image file while browsing your device.

Once you tap an image file, it will be opened in the Image Viewer software in full-screen mode by default.

Drag your finger on the image in left or right direction to view the next and previous images respectfully in the same folder.



You can also view the next and previous images by using the up/down keys on the right side of the device.

In full screen mode, tap the image once to get into the menu mode. In menu mode, you can see other operational buttons as described below:

The purple Zoom-In and Zoom-Out buttons will let you zoom the image for any desired size. This zooming will only will be for viewing and will not effect the original saved image.

In the menu-mode, if the image size is bigger than the screen, then drag your finger on the image for panning.

Tap the Zoom-100% button to view the image in its original or actual size or resolution.

Tap the Full-Screen button to view image in full screen with no buttons. If the image is larger than the screen, it will stretch to fit itself to the screen. And if the image is of smaller size, it will remain in its original size displayed in the centre of the screen.

Tap the Slideshow button to show all the images in the existing folder one by one automatically after some time interval. Tap the screen once in the slide show to stop it and come back the menu mode.

Tap the Rotate Screen button to rotate the device view from Portrait to Landscape or the opposite. Exiting the Image viewer will take back the device back to Portrait mode. All images are opened by default in the image viewer as portrait irrespective of their size and orientation.

The image formats supported currently are:

- Bitmaps (.bmp)
- Jpeg (.jpg)
- Giff (.gif)
- PNG (.png)

Playing Audios:

Tap on any audio file while browsing the device and the audio will be opened in an audio player.

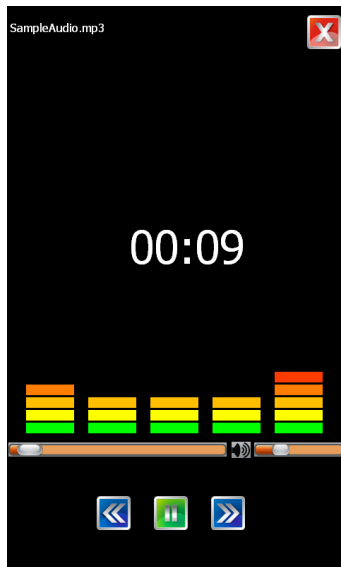
The progress bar will show the position and progress of the audio playing. You can drag the slider to forward or rewind the audio.

Once the audio is finished, the next audio in the same folder will automatically be played.

Use the volume slider to adjust the volume. Click on the “Speaker” icon to mute the audio.

Tap the blue “Next” and “Previous” buttons to play the next or previous audio file in the same folder. If there is no more next or previous file, the same audio will play from the start again.

Use the green “Play” or “Pause” button to Play/Pause the audio any time. The supported audio formats are MP3 and WMA.



Playing Videos:

The device supports playing video clips in different video file formats.

Tap on any MP4 video file while browsing the device and the video would be open and played in Microsoft Video player. Tapping the video screen will play/pause the video. To get back from full-screen mode to normal mode, press one of the two hardware up/down buttons on the side of the device.

For playing other vast variety of Video formats, use the TCMP Video player in the Extra folder of the storage card.

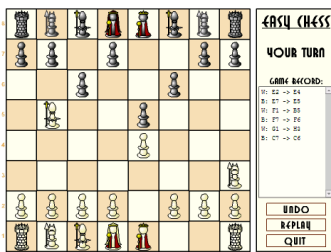
The TCMP player offers a wide selection of formats and settings to make video playback very professional on these device.

You can enjoy high quality, high frame-rate and high resolution videos on this device using the built-in hardware video acceleration feature.

Flash and Games:

The device supports playing flash (.swf) files using its own Flash player.

Tapping any flash file will play the file in the flash player.



The “M” menu icon at the lower left corner allows to do the following:

- Change orientation of player from landscape/portrait
- Play/pause the flash animation
- Exit the flash player.

The G-sensor hardware of the device converts titling of the device physically to respective Left/Right/up/Down keys, which helps existing flash games to be played with moving the device physically in different directions.

Games requiring mouse can be played by touch screen and games requiring the keyboard can be played by connecting an external USB keyboard.

The device comes pre-loaded with hundred of free flash games of different categories.

Windows CE Desktop:

The WindowsCE icon in the Main Menu or Home screen will take you to the Windows CE 6.0 desktop mode.

From here you can use the device more like a tablet PC. You can still access your eBooks from here and do some other things as well.

You can also connect an external USB Mouse, Keyboard or Hard-drive.

You can switch back to Main Menu by restarting the device.



The icons in task bar system tray at the bottom right can let you change the screen orientation to landscape/portrait.

Also the system-tray shows the battery icon, time, wifi connectivity, volume and soft keyboard selection icons.

Using Internet:

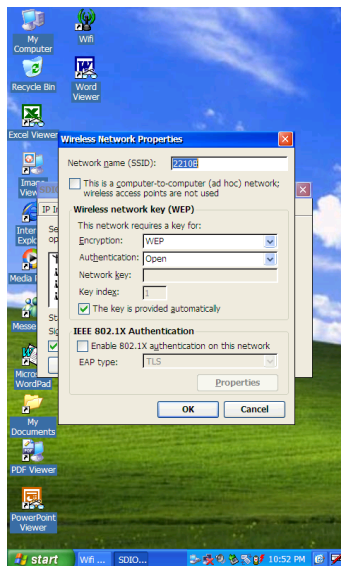
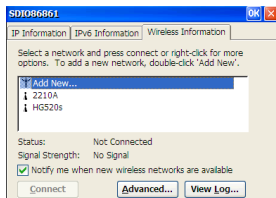
You can go online and surf the Internet using the device built-in Wifi hardware.

You have to go to the Windows CE Desktop mode to use the Internet.

Windows CE is based on low storage and memory resources and is not recommended for viewing very heavy and complex websites.

The Wifi icon on the desktop or Control panel will let you turn the Wifi connection ON or OFF. Keep the Wifi OFF if not using Internet to save battery power. The Wifi hardware consumes lot of current and will reduce the battery power at a very high rate.

Once you turn the Wifi ON, an internet connection icon will appear at the bottom task bar system tray. Also, a window will popup automatically to show the available wireless connection near you.



Select your desired wireless connection by double tapping it. Once you select your wireless connection, a window of “Wireless Network Properties” will appear as show in the image here.

If your wireless connection has a security password then uncheck the “The key is provided automatically” selection. This will enable the “Network key” box where you could enter your network password or key. Use the software keyboard by tapping the keyboard icon on the bottom right corner of the taskbar.

Once you are done with the password entry, tap the OK button and then the “Connect” button.

Once the system goes online, the Wifi connectivity icon in the system tray will show online status.

PC Connectivity:

You can connect your device with your PC using the supplied standard 1 to 1 USB cable.

You might need to install the driver if asked. The drivers are located in the CD which comes with the package. If the CD is lost, you can also download the drivers from our website.

You will also need Microsoft ActiveSync installed. That also comes with the CD. Windows Vista or Windows7 users would need to install the Windows Mobile Device Centre.

You will see your device as a WinCE device or a Mobile Device with other Drives in your "My Computer" window on your PC.

Once connected you can also copy files to your device Home folder or the storage card placed in your device.

Copying files to the storage card once connected with a PC is much slower than copying files directly on a storage card inserted in your PC.

If your device fails to connect with the PC, please confirm the following:

1. Connect with the left USB port of the device
2. If using a Desktop PC, connect at the back or rear end of the PC. USB ports on the front have some time less current.

3. Use the supplied short USB cable. Avoid using long USB cables
4. Do not use any USB HUB or extension cable.
5. The drivers or ActiveSync is installed
6. If Vista/Windows7 on your PC then WMDC is also installed.
7. If the PC has other USB devices attached also, remove them.
8. Restart the PC and the device.